



heatilator®
The first name in fireplaces

Caliber Modern

direct vent gas fireplaces

Caliber Modern

direct vent gas fireplaces



Cover: Caliber Modern 42 shown with simon front, optional reflective glass liner and ceramic stone and crystal glass layered media.

Above: Caliber Modern 36 shown with simon front and optional cobalt blue glass media.

Spacious Modern Style

The Caliber Modern captures fireside nostalgia in a creative new form. This full-sized unit provides modern design in a spacious and traditional size. Safe and efficient performance keeps the distinctive flames dancing, while unique design options help create a variety of custom looks.

Ignite your décor with modern design. And stay warm with the #1 preferred brand by builders.

Features:

- Large viewing areas in both 36 and 42-inch sizes
- Bed of crystal glass included standard
- Optional fade-resistant black glass liner
- 7 additional media options—multiple glass colors and stones to create custom looks
- Up to 32,000 BTUs

Personalize with Upgrades

Simon Front

The Simon front offers a clean, tailored appearance that enhances the modern look.



Simon Front

Media Options

Accent the fire with colored glass, glass beads or ceramic stones. Flames rise through each option differently for a unique look.



Crystal Glass (Included)



Ebony Glass



Cobalt Glass



Amber Glass



Black Glass Beads



White Glass Beads



Clear Glass Beads



Ceramic Stones

Black Glass Liner

Multiply the flames and intensify the fire with an optional fade-resistant reflective liner.



Layered Media Option

A combination of glass and ceramic stones can showcase your modern design in a whole new way.



Additional Options Not Pictured

- Remote Controls
- Fan Kits
- Mantels and Surrounds

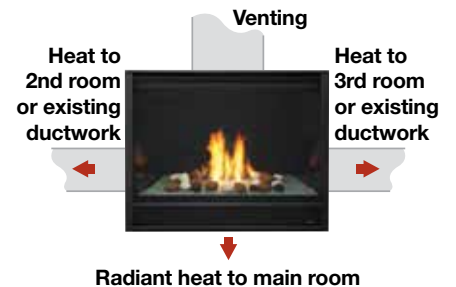


Heat Zone Technology

Draw heat from the Caliber Modern into another room of the home, up to 20 feet away. When a heat zone kit is run continuously, it can redirect up to 25% of the heat produced to another area. Two heat zone kits can be run together to redirect up to 50% of the total heat output.

Heat Duct Technology

This technology helps redistribute heat from the Caliber Modern into the rest of the home by integrating into furnace ductwork. When a heat duct kit is run continuously, it can redirect up to 25% of the heat produced to another area. Two heat ducts can be run together to redirect up to 50% of the total heat output.



IntelliFire™ Plus Ignition System

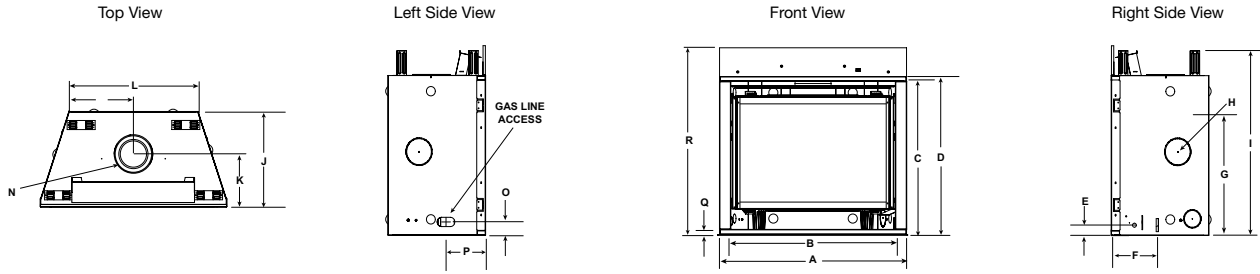
The IntelliFire™ Plus Ignition System (IPI Plus) is an advanced intermittent pilot ignition system with memory settings and a programmable wireless control. IPI Plus constantly monitors ignition, ensures safe functioning and conserves up to \$10/month in energy costs. To learn more, visit heatilator.com.

Direct Vent Technology

Direct Vent fireplaces remove 100% of combustion exhaust and odors outside of the home. These sealed fireplaces provide optimal heat, conserve energy and ensure clean, safe indoor air quality. To learn more, visit heatilator.com.

Technical Specifications

MODEL	FRONT WIDTH		BACK WIDTH		HEIGHT		DEPTH		VIEWING AREA	BTU/HR INPUT
	UNIT	FRAMING	UNIT	FRAMING	UNIT	FRAMING	UNIT	FRAMING		
CD4236-MOD	41" (1041mm)	42" (1067mm)	28-1/2" (724mm)	42" (1067mm)	39-7/8" (1013mm)	40-1/8" (1019mm)	21" (533)	22" (559mm)	32" x 21.5" (813mm x 546mm)	19,000 - 28,000 (NG) 14,000 - 20,000 (LP)
CD4842-MOD	48" (1219mm)	49" (1245mm)	35-1/2" (901mm)	49" (1245mm)	41-7/8" (1064mm)	42-1/8" (1070mm)	21" (533mm)	22" (559mm)	39" x 23.5" (991mm x 597mm)	22,000 - 32,000 (NG) 15,000 - 22,000 (LP)



MODEL	A	B	C	D	E	F	G	H	I	J	K	L	M	N	O	P	Q	R
CD4236-MOD	41" (1041mm)	36-1/8" (918mm)	33-1/2" (851mm)	34-5/8" (879mm)	2-1/4" (57mm)	9-11/16" (246mm)	26-7/8" (683mm)	6" (152mm)	39-7/8" (1013mm)	21" (533mm)	11-11/16" (297mm)	28-1/2" (724mm)	14-1/4" (362mm)	8-1/2" (216mm)	2-7/8" (73mm)	8-1/2" (216mm)	1" (25mm)	40-7/8" (1038mm)
CD4842-MOD	48" (1219mm)	43-1/8" (1096mm)	35-1/2" (902mm)	36-5/8" (930mm)	2-3/8" (60mm)	9-15/16" (252mm)	28-7/8" (734mm)	6" (152mm)	41-7/8" (1064mm)	21" (533mm)	11-11/16" (297mm)	35-1/2" (901mm)	17-3/4" (451mm)	8-1/2" (216mm)	2-7/8" (73mm)	8-1/2" (216mm)	1" (25mm)	42-7/8" (1089mm)

U.S. Efficiencies

Steady State - Since most homeowners use their fireplaces for an extended time while they are in the room, Steady State measures how efficiently your fireplace converts fuel to heat once it is warmed up and running in a "steady state".

AFUE - AFUE rating is more typically used with appliances, like your furnace, that continually cycle on and off to maintain a constant temperature.

Canada Efficiencies

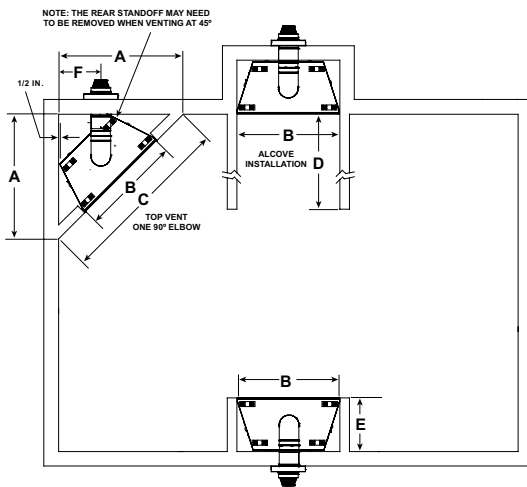
EnerGuide (CSA P.4.1-02) - EnerGuide is a rating used in Canada to measure annual fireplace efficiency.

Rating	CD4236-MOD	CD4842-MOD
Steady State	78.5% (NG)	77.5% (NG)
AFUE	61.1% (NG)	55.9% (NG)

Rating	CD4236-MOD	CD4842-MOD
EnerGuide (CSA P.4.1-02)	63.0% (NG)	61.7% (NG)

Clearances

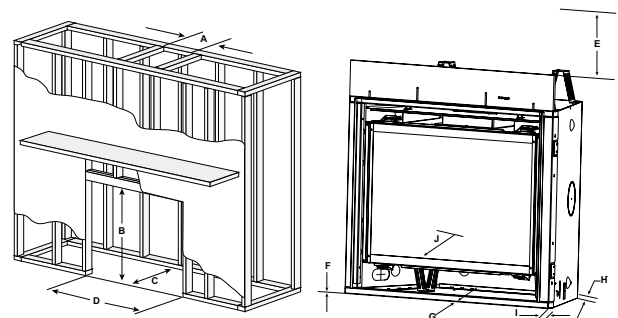
MODEL	A	B	C	D	E	F
CD4236-MOD	51" (1295mm)	42" (1067mm)	72" (1829mm)	See Install Manual for Alcove Installations	22" (559mm)	17-3/4" (451mm)
CD4842-MOD	55-7/8" (1419mm)	49" (1245mm)	79" (2007mm)	See Install Manual for Alcove Installations	22" (559mm)	19-3/4" (502mm)



Framing

MODEL	A ROUGH OPENING (WIDTH)	B ROUGH OPENING (HEIGHT)	C ROUGH OPENING (DEPTH)	D ROUGH OPENING (WIDTH)	E CLEARANCE TO CEILING
CD4236-MOD	10" (254)	40-1/8" (1019mm)	22" (559mm)	42" (1067mm)	25" (635mm)
CD4842-MOD	10" (254)	42-1/8" (1070mm)	22" (559mm)	49" (1245mm)	25" (635mm)

MODEL	F COMBUSTIBLE FLOOR	G COMBUSTIBLE FLOORING	H BEHIND APPLIANCE	I SIDES OF APPLIANCE	J FRONT OF APPLIANCE
CD4236-MOD	0" (0mm)	0" (0mm)	1/2" (13mm)	1/2" (13mm)	36" (914mm)
CD4842-MOD	0" (0mm)	0" (0mm)	1/2" (13mm)	1/2" (13mm)	36" (914mm)



The rough framing dimensions shown represent the distance from stud to stud only and do not take into consideration the addition of drywall. Please refer to installation instructions for complete specifications and drawings when installing this product. Go to heatilator.com to download.

Available From

heatilator
The first name in fireplaces

800-927-6841 | heatilator.com

[facebook.com/Heatilator](https://www.facebook.com/Heatilator)

twitter.com/Heatilator

[youtube.com/HeatilatorFireplaces](https://www.youtube.com/HeatilatorFireplaces)

HTL-1092U-0914

Limited Lifetime Warranty*

The strongest in the industry, Heatilator provides a limited lifetime warranty on gas-burning products of the most important aspects: firebox and heat exchanger.

*For full warranty details go to heatilator.com.

The information provided in this literature is for planning purposes only and subject to change. Please consult the installation manual for actual installation. Actual product appearance may differ from product images.

Fireplace glass and other surfaces get extremely HOT and can cause severe burns if touched. Do not remove the protective safety screen from the front of the glass. Keep a safe distance away. To learn more visit www.heatilator.com/fireplacesafety.

